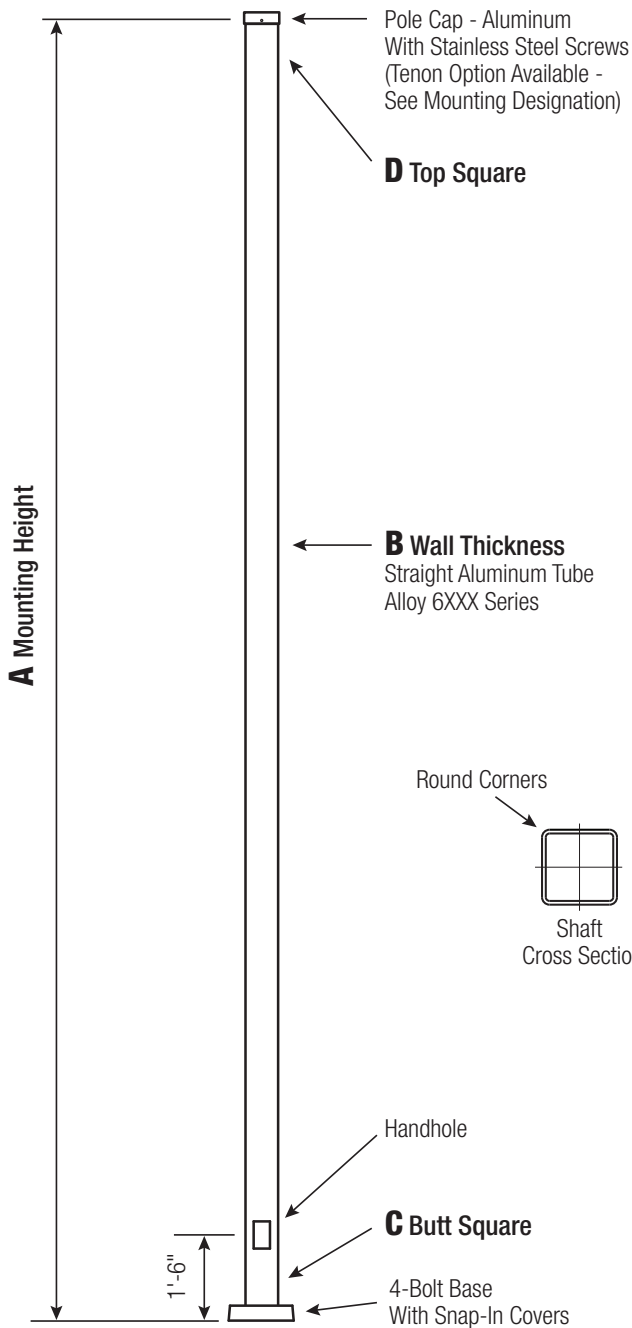


# SSA

## Square Straight Aluminum Pole No Arm — 4-Bolt Base



Satin Aluminum or Powder Coated Finish per Customer Specification.

C BUTT SQ.	D TOP SQ.	F BOLT CIR. DIA.	G BASE SQ.	H BOLT PROJ.	I BOLT SIZE
4	4	8.5 - 9.5	9.875	1.5	.75 x 17 x 3
5	5	10.5 - 11.5	11.25	2	.75 x 30 x 3
6	6	12 - 13	12.75	2.25	1 x 36 x 4
6.625	6.625	13 - 14	13.5	2.25	1 x 36 x 4

Dimensions in Inches



Solar Lighting International®, Inc.

Phone +1 803-233-3461 | www.solarlightingintl.com

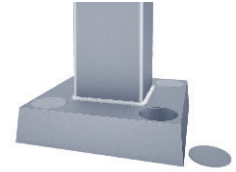
The Name Solar Lighting International® is a Registered Trademark.

### Pole

The pole shaft will be constructed of seamless extruded tube of 6XXX Series Aluminum Alloy per the requirements of ASTM B221. The shaft assembly shall be full-length heat treated after base weld.

### Base Style

4-Bolt Cast Aluminum Base Flange of Alloy 356-T6 with Aluminum Snap-In Bolt Covers.



### Handhole

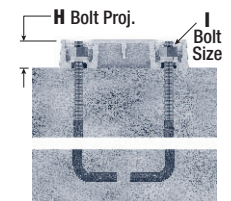
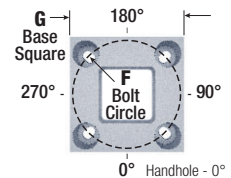
**4"-5" Butt Squares -**  
2" x 4" Handhole with square Lap Style Aluminum Door and two (2) Stainless Steel Self-Tapping Attaching Screws. A Grounding Provision incorporating a tapped 1/4"-20NC Grounding Provision is provided opposite the Handhole.



**6"+ Butt Square -**  
3" x 5" Handhole with square Lap Style Aluminum Door and two (2) Stainless Steel Self-Tapping Attaching Screws. A Grounding Provision incorporating a tapped 1/4"-20NC Grounding Provision is provided opposite the Handhole.

### Anchorage

Anchorage Kit will include four (4) L-shaped Steel Anchor Bolts conforming to AASHTO M314-90 Grade 55. Ten inches (10") of threaded end will be galvanized per ASTM A153. Kits will contain four (4) Hex Nuts, four (4) Lock Washers, and four (4) Flat Washers (all components Galvanized Steel). A bolt circle template will be provided.



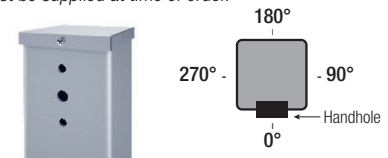
### Vibration Damper

If determined necessary, a top-mount, field installed First Mode Vibration Damper will be provided. Customer specification of the damper is available.

### Mounting Designation

#### Side Drill Mount

For Side Drill Mount applications specify luminaire type, quantity and orientation. A luminaire drilling template must be supplied at time of order.



#### Tenon Mount

For Tenon Mount applications specify both Tenon diameter (2.375", 2.875", 3.5", etc.) and length (3", 4", etc.).



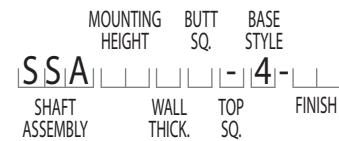
**WARNING:** Do not install light pole without luminaire.

**FLORIDA BUILDING CODE GUIDE**  
2017 FBC EPA's

A Mtg. Hgt.	B Wall Thickness	C Butt Sq.	TOTAL LUM. WEIGHT	MAXIMUM EPA								OLD CATALOG NUMBER	CATALOG NUMBER
				120	130	140	150	160	170	180			
08	0.125	4	90	10.6	8.8	7.4	6.3	5.4	4.7	4.0	11-043	SSA08B4-4-**-	
10	0.125	4	70	7.7	6.3	5.2	4.3	3.6	3.0	2.5	11-063	SSA10B4-4-**-	
10	0.188	4	100	11.6	9.7	8.1	6.8	5.8	5.0	4.3	11-064	SSA10D4-4-**-	
12	0.125	4	55	5.6	4.5	3.6	2.9	2.3	1.8	1.4	11-083	SSA12B4-4-**-	
12	0.188	4	75	8.8	7.2	6.0	4.9	4.1	3.4	2.8	11-084	SSA12D4-4-**-	
12	0.188	5	140	17.0	14.1	11.7	9.9	8.3	7.1	6.0	11-087	SSA12D5-4-**-	
14	0.125	4	45	4.0	3.1	2.3	1.7	1.2	0.8	-	11-103	SSA14B4-4-**-	
14	0.188	4	65	6.7	5.4	4.3	3.5	2.8	2.2	1.7	11-104	SSA14D4-4-**-	
14	0.188	5	115	13.4	10.9	9.0	7.4	6.1	5.0	4.1	11-107	SSA14D5-4-**-	
15	0.125	4	40	3.4	2.5	1.8	1.2	0.8	-	-	11-123	SSA15B4-4-**-	
15	0.188	4	55	5.9	4.6	3.6	2.8	2.2	1.6	1.2	11-124	SSA15D4-4-**-	
15	0.188	5	100	11.9	9.6	7.8	6.3	5.1	4.1	3.3	11-127	SSA15D5-4-**-	
16	0.125	4	40	2.7	1.9	1.3	0.8	-	-	-	11-143	SSA16B4-4-**-	
16	0.188	4	50	5.0	3.9	3.0	2.3	1.7	1.2	0.7	11-144	SSA16D4-4-**-	
16	0.188	5	90	10.5	8.4	6.7	5.3	4.2	3.3	2.5	11-147	SSA16D5-4-**-	
18	0.125	4	40	1.6	0.9	-	-	-	-	-	11-163	SSA18B4-4-**-	
18	0.188	4	45	3.6	2.6	1.9	1.2	0.7	-	-	11-164	SSA18D4-4-**-	
18	0.250	4	55	5.3	4.1	3.1	2.3	1.7	1.1	0.7	11-165	SSA18F4-4-**-	
18	0.188	5	75	8.0	6.2	4.8	3.6	2.6	1.8	1.2	11-167	SSA18D5-4-**-	
20	0.125	4	40	0.7	-	-	-	-	-	-	11-183	SSA20B4-4-**-	
20	0.188	4	40	2.4	1.6	0.9	-	-	-	-	11-184	SSA20D4-4-**-	
20	0.250	4	45	3.9	2.8	2.0	1.3	0.7	-	-	11-185	SSA20F4-4-**-	
20	0.188	5	60	6.0	4.4	3.1	2.1	1.3	0.6	-	11-187	SSA20D5-4-**-	
20	0.250	5	80	8.9	6.9	5.3	4.0	2.9	2.1	1.3	11-188	SSA20F5-4-**-	
20	0.188	6	80	8.7	6.5	4.7	3.3	2.1	1.2	-	11-190	SSA20D6-4-**-	
20	0.250	6	115	12.9	10.0	7.8	6.0	4.5	3.3	2.2	11-191	SSA20F6-4-**-	
25	0.188	5	40	2.1	0.9	-	-	-	-	-	11-247	SSA25D5-4-**-	
25	0.250	5	50	4.2	2.8	1.6	0.6	-	-	-	11-248	SSA25F5-4-**-	
25	0.188	6	45	3.4	1.8	-	-	-	-	-	11-250	SSA25D6-4-**-	
25	0.250	6	70	6.6	4.4	2.7	1.4	-	-	-	11-251	SSA25F6-4-**-	
25	0.250	6.625	95	9.9	7.1	4.9	3.1	1.6	-	-	11-254	SSA25FJ-4-**-	
30	0.250	6	40	2.0	-	-	-	-	-	-	11-291	SSA30F6-4-**-	
30	0.250	6.625	55	4.2	2.0	-	-	-	-	-	11-294	SSA30FJ-4-**-	

**Catalog Number System**

The catalog number for our poles utilizes the following identification system.



**Catalog Number Example -**

**SSA 20 D 5 - 4 - BA**

Square Straight Aluminum, 20' Mounting Height, .188" Wall Thickness, 5" Butt Square, No Taper, 4-Bolt Base, Black Powder Coat Finish.

**Wall Thickness**

- B = .125"
- D = .188"
- F = .250"

**Butt Square**

- 4 = 4"
- 5 = 5"
- 6 = 6"
- J = 6-5/8"

**Top Square**

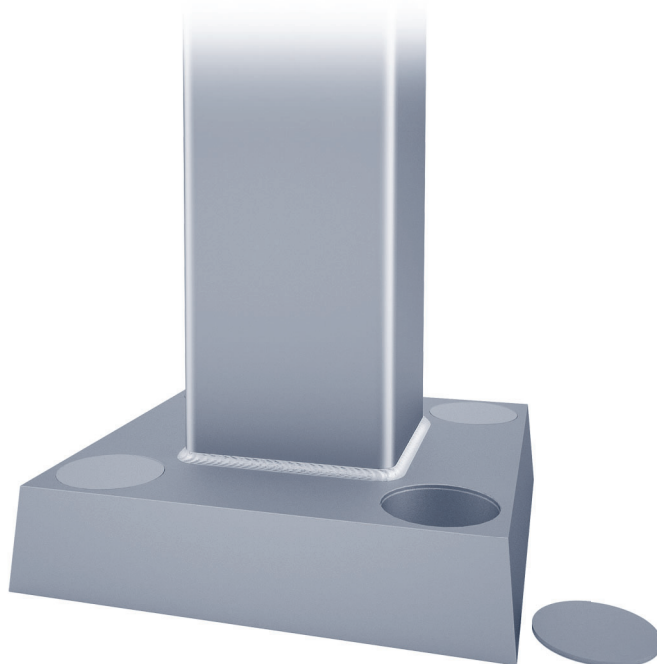
- = No Taper

**Base Style**

- 4 = 4-Bolt Base

**Finish**

- BA = Black Powder Coat
- BH = White Powder Coat
- BM = Dark Bronze Powder Coat
- BV = Dark Green Powder Coat
- GC = Gray Powder Coat
- \*\* = Specify Finish



Solar Lighting International®, Inc.

Phone +1 803-233-3461 | www.solarlightingintl.com

The Name Solar Lighting International® is a Registered Trademark.

**EPA Note:**

EPA's based on symmetrically placed side mounted fixture(s) not exceeding height of the pole.