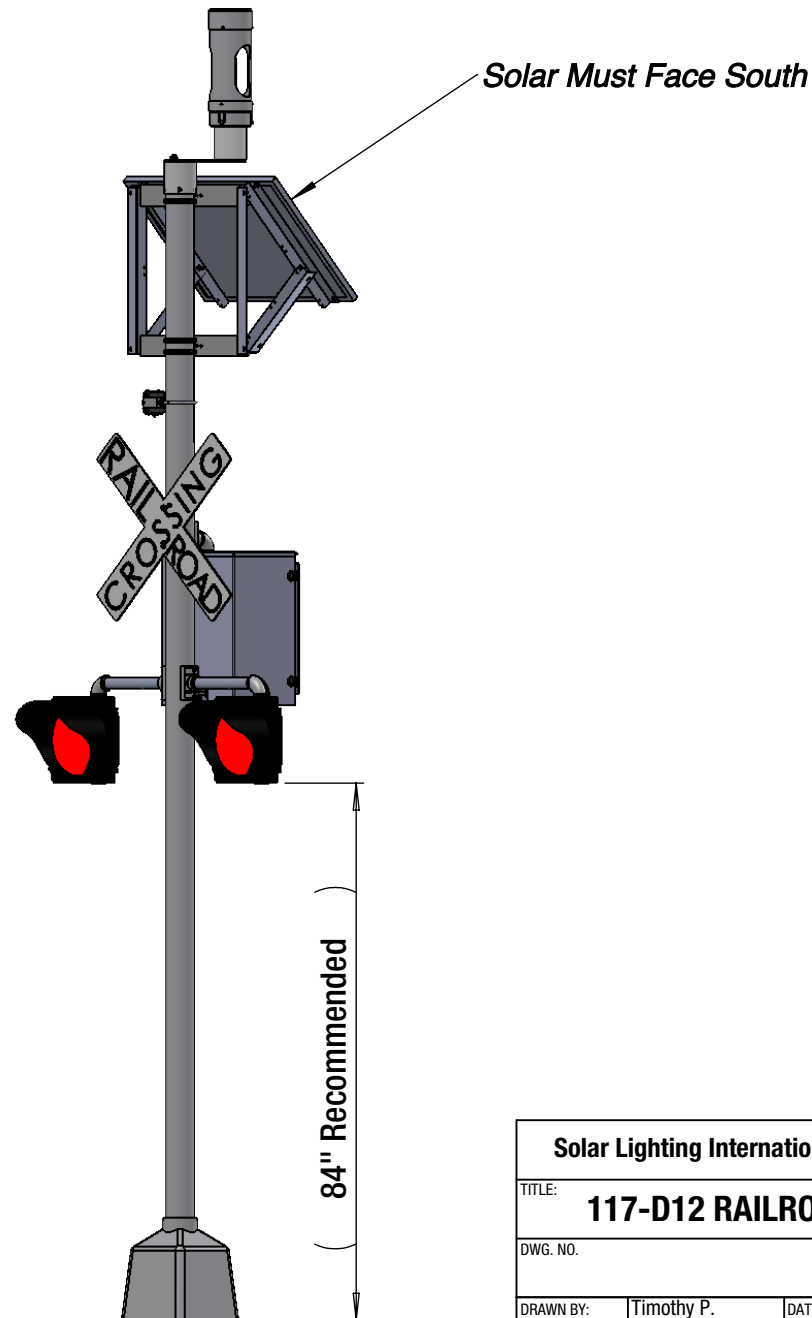


117-D12 Solar Railroad Crossing

Railroad crossing warning system. Radar activated with timing adjustments. Crossing bell. Double 12" Red LEDs, polycarbonate heads, 80 watt solar panel with mounting bracket, aluminum lockable box, Crosstalk controller.

* 17ft. pole may be required if additional lights or signs are used



Solar Lighting International, Inc.

Phone +1 803-233-3461 | www.solarlightingintl.com

The Name Solar Lighting International® is a Registered Trademark.

Solar Lighting International®, Inc.		
TITLE: 117-D12 RAILROAD		
DWG. NO.		
DRAWN BY:	Timothy P.	DATE: 1-15-21
CHECKED BY:	Mike Taylor	DATE: 1-15-21
PROPRIETARY AND CONFIDENTIAL The information contained in this drawing is the sole property of Solar Lighting International®, Inc. Any reproduction in part or as a whole without the written permission of Solar Lighting International®, Inc. is prohibited.		
CHECK LOCAL CODES FOR ALL MEASUREMENTS		
Revision:	Scale: 1:30	Size: 8.5 X 11 Sheet: 1 of 6